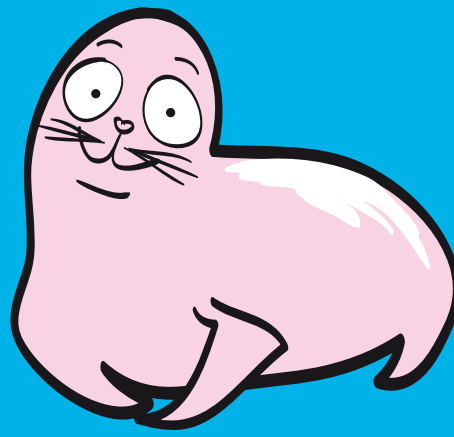


Organised
by 7 Themes of PNS
'Excellence and Enjoyment: social
and emotional aspects of learning'



SUPPORTING S.E.A.L.

Social and Emotional Aspects of Learning



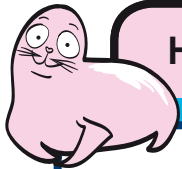
"Supporting S.E.A.L. is a fantastic resource that instantly translates theory into practice – it's got everyone on board – children, parents, teachers and SMSAs – a real revolution in whole-school strategy"
- Deputy Head

A practical, ready to use whole-school and classroom resource to support the development of children's social, emotional and behavioural skills

- ★ Assemblies ★ Stories ★ Illustrations ★ Certificates
- ★ Whole-school Posters ★ Wise words ★ Music ★ Art
- ★ Skills and Strategies ★ Tracking

By **Julie Casey** M.Ed, C.Psychol & **Maggie Walker** M.Ed

Excellence and Enjoyment: social and emotional aspects of learning curriculum resource*



How 'Supporting S.E.A.L.' works for schools

1. Engages the whole-school community—ethos in action!
2. Promotes and celebrates practical application of SEBS
3. Stands alone or dovetails seamlessly with DfES SEAL resources
4. Engages hearts and minds – memorable, age-appropriate stories and pictures bring to life the key concepts, skills and strategies of SEBS

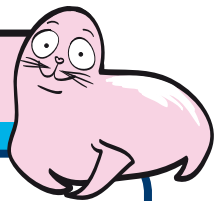
With this resource, developing the whole-school ethos that promotes SEBS couldn't be simpler... Posters, certificates and whole-school assemblies translate theory into practice instantly!

The profile of classroom based programmes to develop children's social, emotional and behavioural skills has been raised through the national availability of The Primary National Strategy's 'Excellence and enjoyment: social and emotional aspects of learning.'^{*}

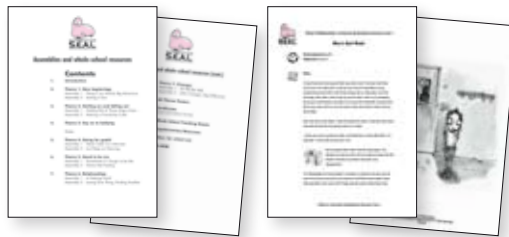
Research shows that, to be successful, taught programmes need whole-school environmental support. Within this environment the repeated practice of social, emotional and behavioural skills takes place. Through repetition they become natural practice.

Supporting S.E.A.L. provides BOTH materials that develop social and emotional learning through classroom work, AND attractive resources to create a supportive whole-school ethos.

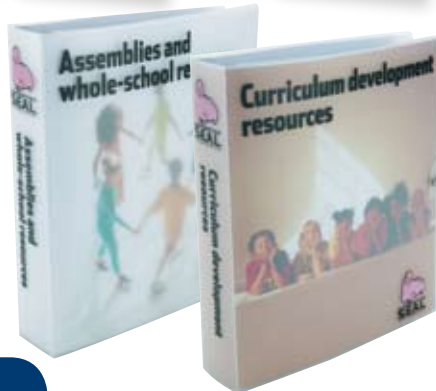
What does 'Supporting S.E.A.L. Social and Emotional Aspects of Learning' consist of?



Practical ready to use age-related teaching/whole-school materials



Two files – assemblies and whole school resources and curriculum development materials – both organised under the seven theme titles of the PNS resource for ease of integration with the PNS strategy



Sturdy carry-case



Accompanying guidance and CD-ROMS of materials for multiple copies

File 1:

Assemblies and whole-school resources

- A3 full-colour theme-related posters to display around the school.
- 28 A4 full-colour certificates for pupils celebrating the application of SEBS around the school or at home.
- Nomination slips - allow staff, parents and children to propose each other for awards and certificates (yes, children can nominate adults too!).
- Scripted and illustrated interactive assemblies for older and younger pupils - introduction, story and conclusion, plus music, art, and 'wise words' suggestions.
- Whole-school tracking sheets – aid planning and integration with PNS strategy and other resources.
- Supplementary resource sheets – keep track of school materials that support the theme.
- Space to add and organise your own resources – relevant assemblies, stories, articles and activity ideas.

File 2:

Curriculum development resources

- More than 20 fully illustrated stories, differentiated for different year or ability groups.
- Development ideas for using the stories; widening emotional vocabulary, exploring and teaching skills and strategies.
- Simple class tracking sheets to aid planning, record progress and assess performance 'at a glance'.
- Supplementary resource sheets to keep track of related classroom materials.
- Dedicated section to add your own collection of resources and ideas.

How can it be used in school and what benefits does it offer?

The resource offers a flexible range of benefits to the school, and can be used to promote a whole-school ethos to support children's SEBS

- Make S.E.A.L. work at the whole school level. These beautifully designed A3 colour display posters list 4 skills with a whole-school and visitor focus for 'catching children being good'. Certificates celebrate SEBS being put into practice in the classroom, around the school, at home and in the community. Print off as many as you like from the CD.
- Engage the whole school community through the many scripted interactive and beautifully illustrated assemblies. Dovetail perfectly with the PNS resource – equally useful in their own right. Stimulating sensitive stories to bring alive the taught programmes concepts and skills.
- Whole-school tracking sheets enable co-ordinators to plan and ensure integrated whole-school coverage of the materials.

Encourage and celebrate the practical application of SEBS

Research shows that the embedding of SEBS and practical application (around the school, in the playground and in community and home environments) requires encouragement, recognition and celebration.

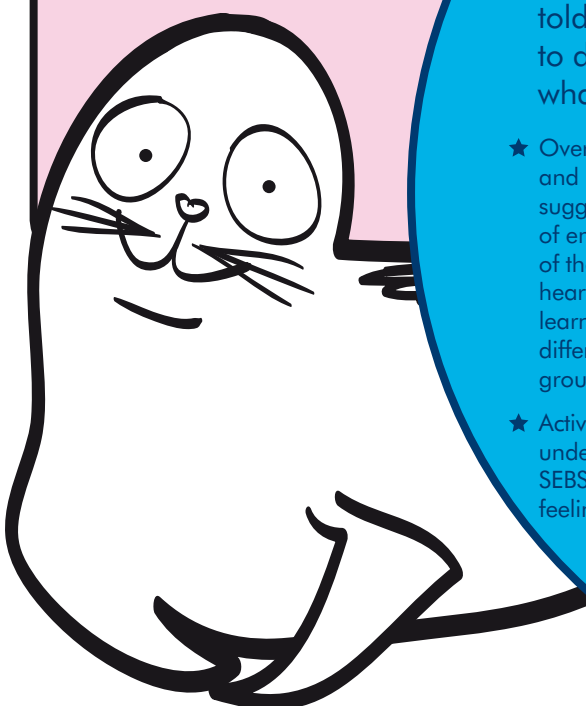
- Involve the whole school community in providing these – staff, pupils, visitors and parents can 'nominate' children (or adults!) for a SEAL certificate. staff, children and visitors can use the nomination slips whenever they 'catch' someone putting their SEBS into practice. Send nomination slips home to strengthen family-school links.
- Use your rewards assemblies to celebrate the practical application of SEBS in the school community. Recognise and celebrate the practical application of SEBS using the specific theme-related certificates, or use the certificates more generally throughout the year.



Vastly expands your range of ready-to-use classroom activities to support each of the PNS Themes

Our research shows unanimous, positive and enthusiastic feedback from schools involved in the Primary Behaviour and Attendance Pilot who use the PNS resource, BUT you told us that you needed MORE! More quality resources to develop and extend the theme related content – that's what Supporting S.E.A.L. offers through:

- ★ Over 30 beautifully illustrated stories and assemblies, each with follow-up suggestions covering the five key domains of emotional literacy. Stories represent one of the most powerful ways to engage the heart and the head in social and emotional learning, and these moving stories, differentiated for use with different year group, captivate children and adults alike.
- ★ Activities focus on the knowledge, skills and understanding involved in developing good SEBS including: Self-awareness; Managing feelings; Motivation; Empathy; Social skills.
- ★ Development ideas are included with each story and assembly to:
 - Encourage exploration of the key themes
 - Develop children's vocabulary and understanding of their emotions
 - Teach and reinforce skills and strategies for managing emotions, solving problems, taking responsibility and making positive choices
- ★ Tracking sheets allow teachers to follow individual progress easily and quickly.



Quality assured

An ever-widening resource centre for your S.E.A.L. related materials

As you work through your PSHE/SEAL programme you will find many more resources linked to the content. Keep track of what and where these are:

- use the 'supplementary resources' sheets to note relevant resources and links
- use the dedicated sections in the spacious file to extend your collection of relevant stories, poems etc.

Futurelink Publishing have used two of the very best writers in this field for this resource - both of them major contributors to the PNS materials. Maggie Walker, a children's writer and ex-primary head and LEA advisor on PSHE and writer of the assemblies and many of the stories contained in the PNS resource, and Julie Casey, Chartered Psychologist and former primary Teacher of the Year.

The stories, assemblies and activities dovetail seamlessly with the philosophy and learning intentions of the PNS resource, making it easy to integrate into ongoing work. Equally, the material can stand alone as an exceptionally high-quality addition to a schools existing SEAL/PSHE resources.

* Primary National Strategy curriculum materials 'Excellence and Enjoyment: social and emotional aspects of learning' (DfES 0110-2005 G).

What the experts say...

"Excellent addition to our existing PSHE programmes and resources"

- PSHE Co-ordinator

"The stories, pictures, posters and certificates bring alive the ideas suggested in the DfES resource – just what we were waiting for"

- Learning Mentor

"Complements and extends the themes of the Primary National Strategy curriculum resource – scripted and sensitive assemblies save hours of time, the captivating stories and journals exemplify key SEBS messages just when you need them in the classroom"

- Year 6 Teacher

FutureLink Publishing

16 Harford Square, Chew Magna, Bristol BS40 8RA

Tel: 01275 331300 Fax: 01275 331301

www.futurelinkpublishing.co.uk

© 2005 FutureLink Publishing